

the EMERALD

HYDE PARK



INVEST
IN THE BEST ADDRESS

NATURAL
PROPERTY

Legaro
PROPERTY
DEVELOPMENT

URBAN LUXURY



ABOUT

From Legaro Property Development, the international award-winning developer of Africa's highest-rated green building, comes The Emerald, a luxury residential development that redefines urban designer living.

With its immaculately finished one-, two-, and three-bedroom apartments, its luxurious signature penthouses, its world-class onsite lifestyle centre and its state-of-the-art security and backup power, The Emerald is a gem waiting to be discovered.



1-, 2- and 3- Bedroom Apartments



Signature Penthouses



From R2 099 900



54 6th Road, Hyde Park



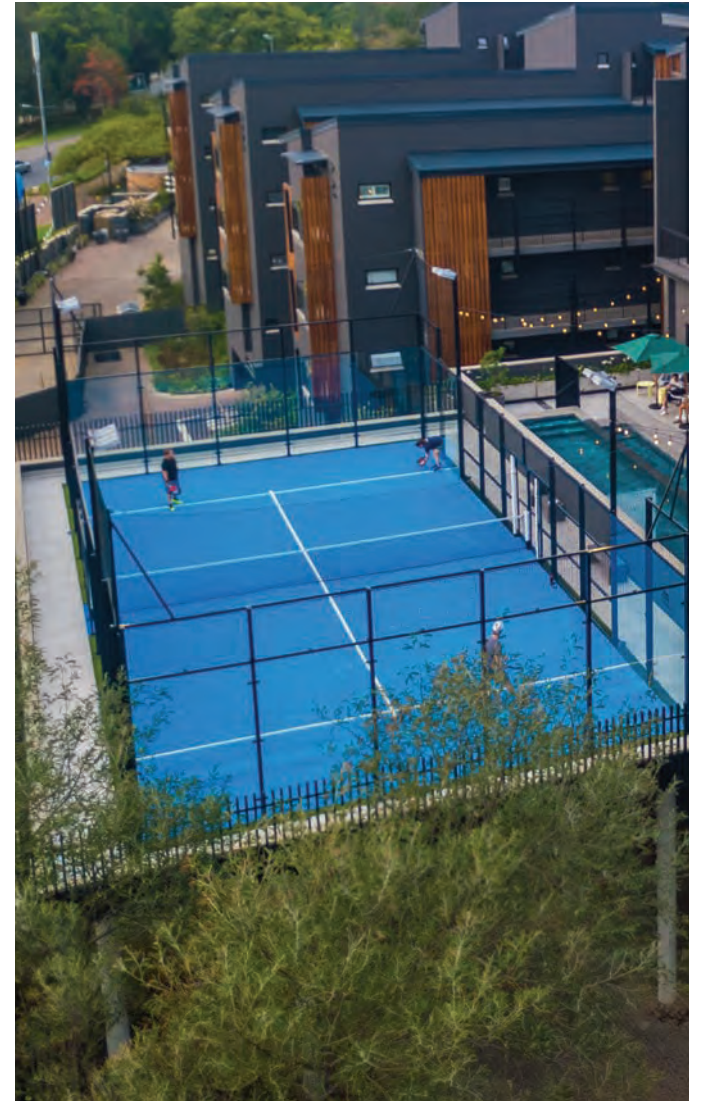
EXCLUSIVE
LIFESTYLE

LIFESTYLE CENTRE

Welcome to The Emerald Lifestyle Centre, where every aspect of well-being and leisure is catered for.

Designed to elevate everyday experiences, from fitness to wellness, entertainment to family fun, and convenience to business, the Lifestyle Centre offers a seamless blend of relaxation and productivity, ensuring that whether residents are working or playing, they are doing it close to home and in style.





the **EMERALD**
Café



Concierge Service



Meeting Rooms



Business Lounge
with Wi-Fi



Laundromat run
by Washpro



Indoor Kiddies
Play Area



Sky Padel



Fully Equipped Training Science Gym

Indoor and Outdoor Swimming Pools

Yoga Studio

Steam Room

Ice Recovery Bath

Cryotherapy

Chess Set

Dog Park



1-, 2- AND 3- BEDROOM APARTMENTS

Enjoy designer living at The Emerald in Hyde Park.

Each 1-,2-,3- bedroom apartment is generous in its use of space and features the finest finishes. Each luxury apartment includes free:

- SMEG appliances
- 1 Bedroom - 1 Basement Parking Bay
- 2 & 3 Bedroom - 2 Parking Bays
- Storerooms are available at an additional cost

The entire development is equipped with leading biometric access, 24/7 private security, solar PV systems, inverters, and battery packs for sustainable and secure living. Residents will also receive access to Morsim Park.

**APARTMENTS FROM R2 099 900
NO TRANSFER FEES OR DUTIES**



LUXURIOUS
LIVING SPACES

1 BEDROOM LAYOUT



TYPE Q

1 Bedroom | 1 Bathroom | Total Area: 77m²

1 BEDROOM LAYOUT



TYPE S

1 Bedroom | 1 Bathroom | Total Area: 79m²

FLOOR PLANS

2 BEDROOM LAYOUT



TYPE M

2 Bedrooms & 2 Bathrooms | Total Area: 107m²

2 BEDROOM LAYOUT



TYPE R

2 Bedrooms & 2 Bathrooms | Total Area: 117m²

3 BEDROOM LAYOUT



TYPE X

3 Bedrooms | 3 Bathrooms

Total Area: 145m² | Garden Area 100²

3 BEDROOM LAYOUT



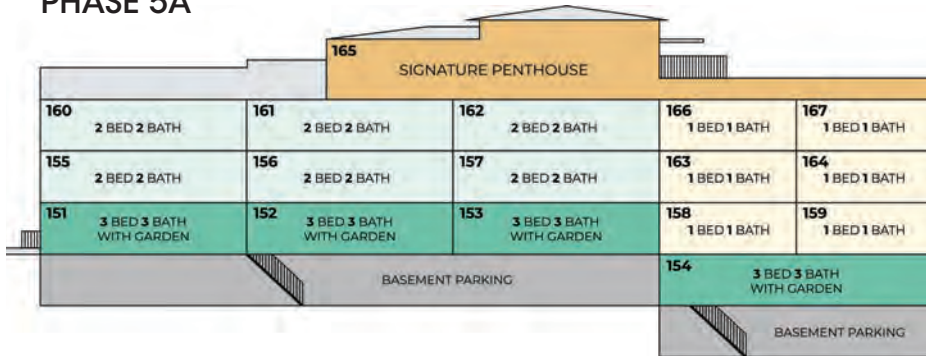
TYPE W

3 Bedrooms | 3 Bathrooms

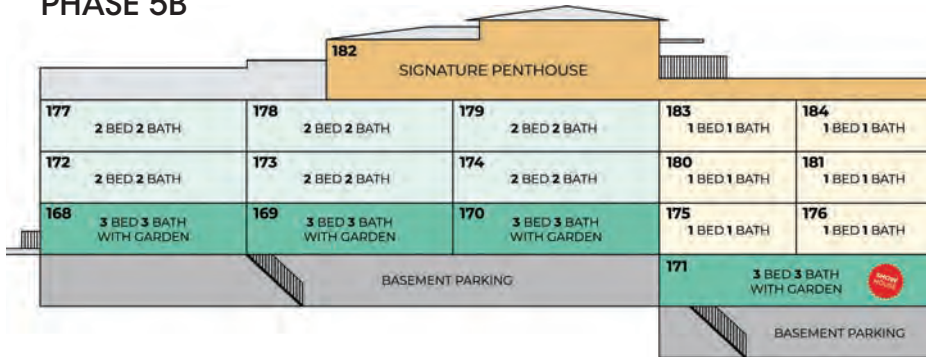
Total Area: 154m² | Garden Area 161m²

PHASE 5 ELEVATION PLANS

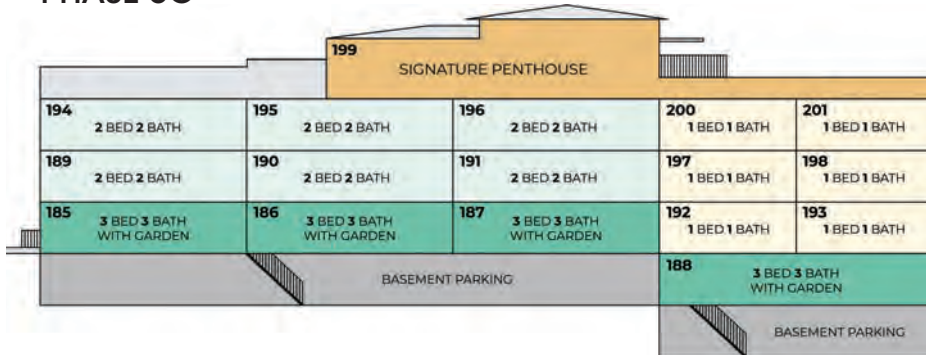
PHASE 5A



PHASE 5B



PHASE 5C



A modern living room with large windows and a brown sectional sofa. The room features a large, light-colored woven rug, a dark wood coffee table, and a matching ottoman. The windows offer a view of a landscape with a body of water and hills. The text "THE CROWN JEWEL" is overlaid on the left side of the image.

THE CROWN JEWEL

SIGNATURE COLLECTION

SIGNATURE PENTHOUSES

Nestled at the pinnacle of opulence, the Signature Penthouses redefine luxury living with their unparalleled design, modern amenities and skyline views.

Each exquisite Signature Penthouse features:

- SMEG kitchen appliances
- Elegant timber walls
- A lock-up-and-go six-car garage
- Spacious landscaped gardens
- Shared elevator allowing private access to penthouses

The entire development is equipped with leading biometric access, 24/7 private security, solar PV systems, inverters, and battery packs for sustainable and secure living.

SIGNATURE PENTHOUSES FROM R 11 999 900 NO TRANSFER FEES OR DUTIES

This exclusive transfer-savings promotion offers unparalleled value, making the Signature Penthouse at The Emerald a wise investment for the future.





the **EMERALD**
HYDE PARK

ON SHOW Wednesday & Sunday from 2pm – 5pm
Saturday from 10am – 1pm

CONTACT Chris Berdains
079 287 4002 | chris@naturalproperty.co.za

NATURAL
PROPERTY

Legaro
PROPERTY
DEVELOPMENT

LIGHTS ON



AT THE EMERALD

Live life without the interruption of load shedding thanks to The Emerald's solar panel installation and backup power. Residents get up to six hours of relief from load shedding, ensuring a convenient, luxurious lifestyle.

