



PHASE THREE

the EMERALD

HYDE PARK

54 SIXTH ROAD, HYDE PARK

AFRICAN PROPERTY AWARDS
DEVELOPMENT

AWARD WINNER

RESIDENTIAL DEVELOPMENT
SOUTH AFRICA

The Emerald Hyde Park
by Legaro Property Development (Pty) Ltd in collaboration with Daffonchio & Associates Architects

2020-2021

AFRICAN PROPERTY AWARDS
DEVELOPMENT

AWARD WINNER

RESIDENTIAL DEVELOPMENT
SOUTH AFRICA

38 Marsden Road
by Legaro Property Development (Pty) Ltd in collaboration with Daffonchio & Associates Architects

2020-2021

AFRICAN PROPERTY AWARDS
ARCHITECTURE

★★★★★

BEST OFFICE ARCHITECTURE
SOUTH AFRICA

78 Carlotta Drive
by Legaro Property Development (Pty) Ltd in collaboration with Daffonchio & Associates Architects

2020-2021

AFRICAN PROPERTY AWARDS
INTERIOR DESIGN

AWARD WINNER

OFFICE INTERIOR
SOUTH AFRICA

78 Carlotta Drive Interior
by Legaro Property Development (Pty) Ltd in collaboration with Daffonchio & Associates Architects and Imbewu Design

2020-2021

PHASE 3
LAUNCHED

BUY DIRECT
FROM THE DEVELOPER

NO TRANSFER
FEES OR DUTIES

**AWARD-WINNING LUXURY HYDE PARK
APARTMENTS FROM R1,985,000**

From Legaro Property Development, the international award-winning developers of Africa's highest-rated green building, comes The Emerald, a luxury residential development that is the very definition of urban designer living. Situated in the exclusive suburb of Hyde Park, this secure development is underpinned by world-class craftsmanship and construction, the hallmarks of every Legaro property.

WHERE WORK MEETS PLAY

The Emerald Lifestyle Centre offers residents exclusive use of a number of convenient services and amenities.



CAFE & COFFEE SHOP



24HR CONCIERGE



MEETING ROOMS



COMMUNAL LOUNGE WITH WIFI



LAUNDROMAT



WHERE WORK MEETS PLAY

The Emerald Lifestyle Centre offers residents exclusive use of a number of convenient services and amenities.



The Wellness Company

FULLY EQUIPPED
TECHNOGYM



ICE RECOVERY
BATH



STEAM ROOM



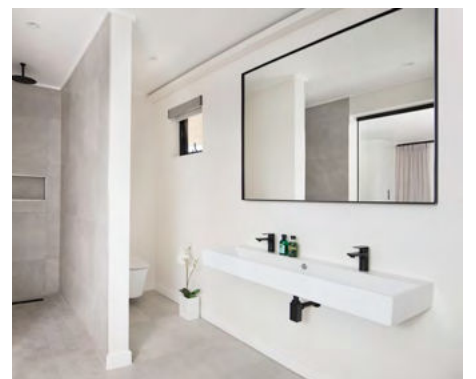
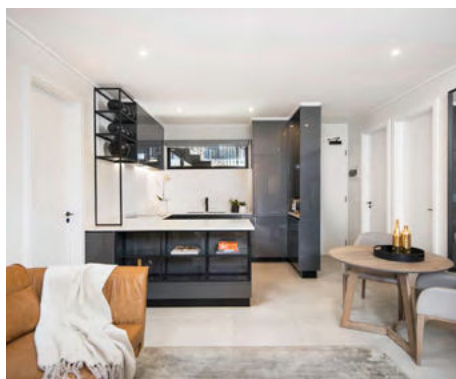
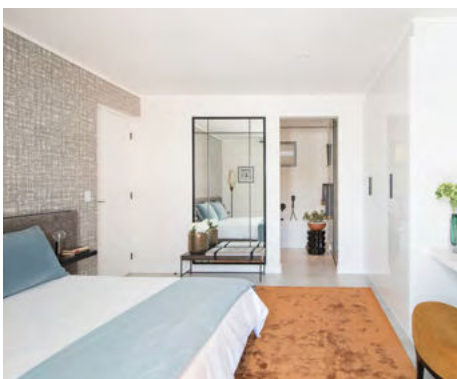
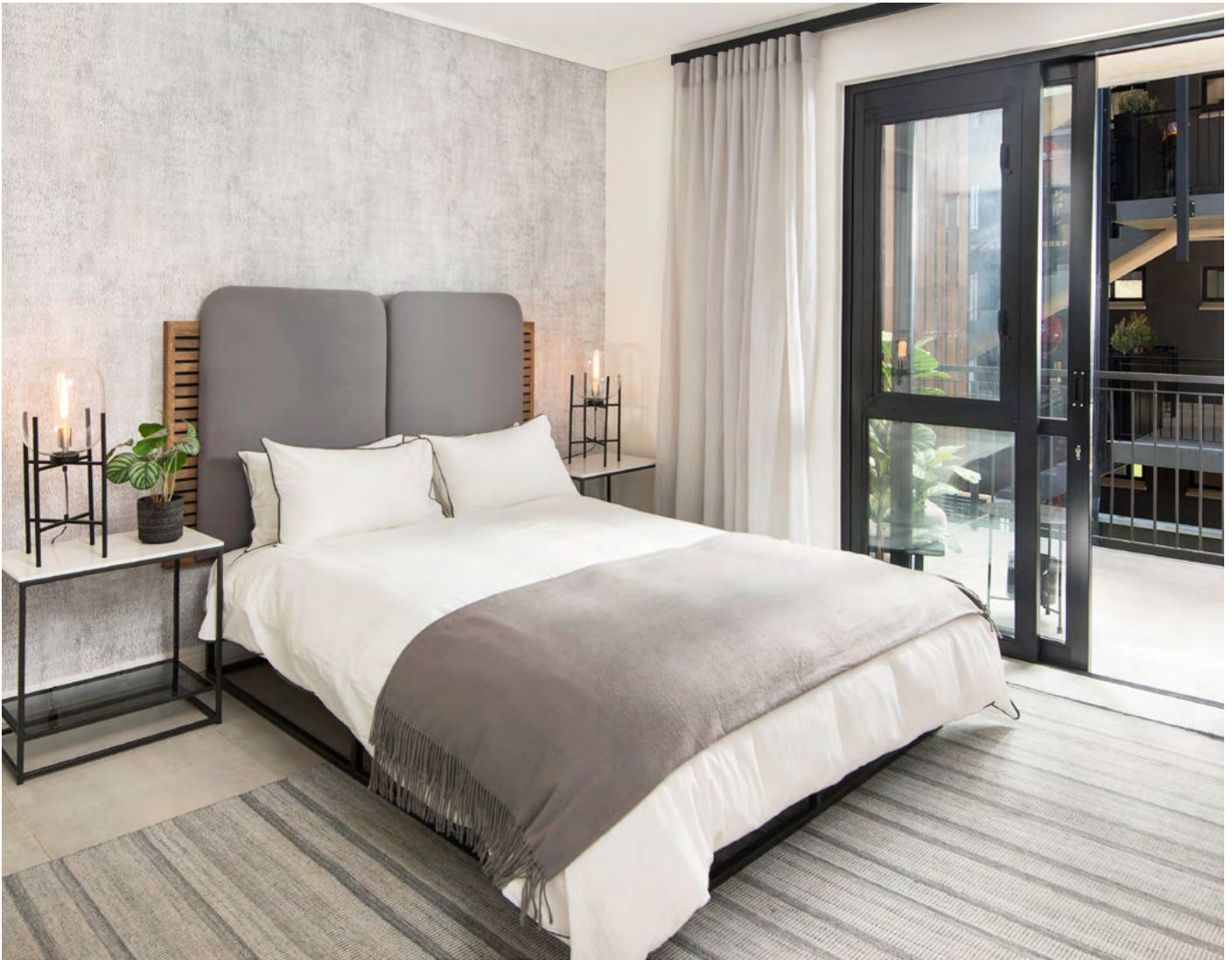
25M INDOOR
SWIMMING POOL



YOGA
STUDIO



EXQUISITE APARTMENTS WITH LUXURY FINISHES

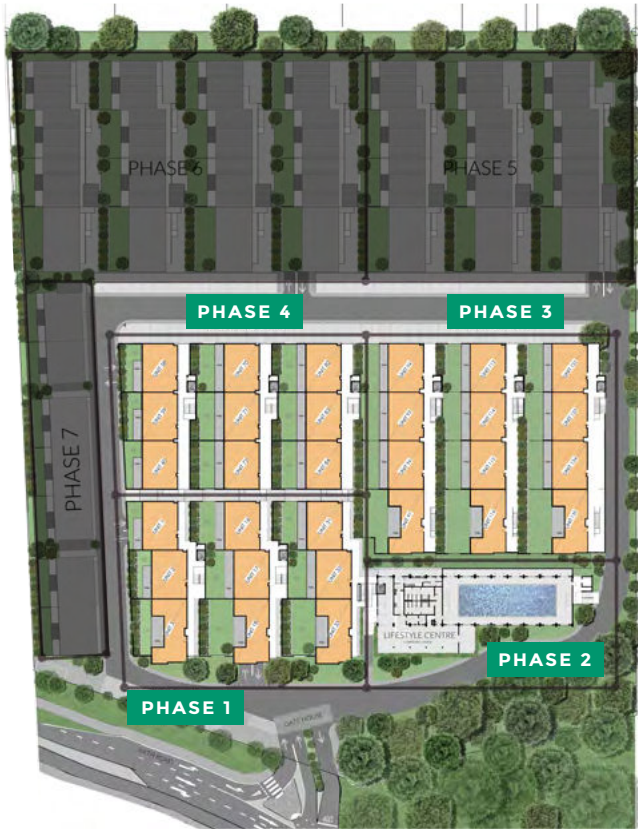


Creating a space for an unparalleled lifestyle with The Emerald, Daffonchio Architects thought of everything: ease of living, accessibility and sustainability. From the well appointed apartments to the impressive lifestyle center, The Emerald delivers on every level. By paying attention to every detail, every aspect of the design has been carefully considered to create apartments that are generous in their use of space and feature the finest finishes.

THE EMERALD SITE PLAN



GROUND FLOOR



FIRST FLOOR



SECOND FLOOR

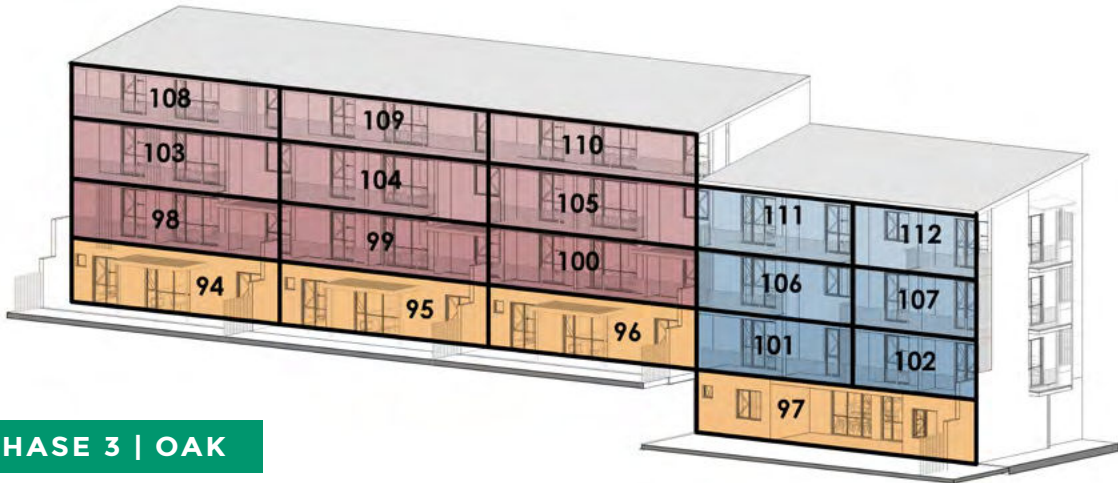


THIRD FLOOR

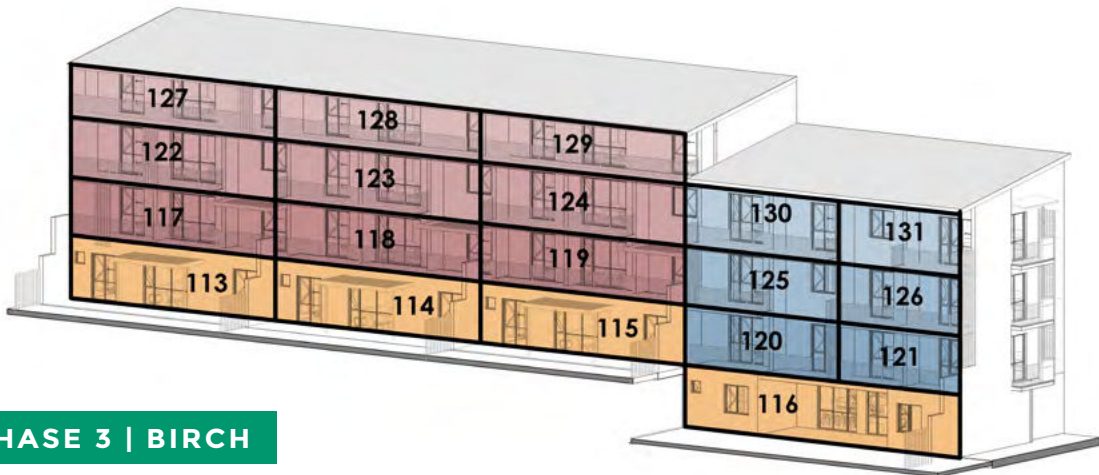


COLOUR KEY:  1 BED, 1 BATH  2 BED, 2 BATH  3 BED, 3 BATH

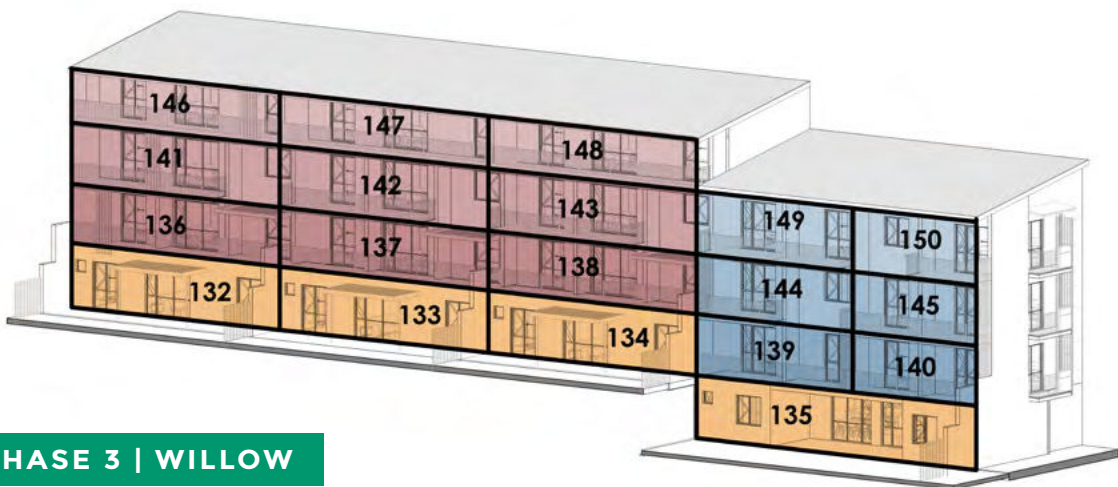
PHASE THREE ELEVATIONS



PHASE 3 | OAK



PHASE 3 | BIRCH



PHASE 3 | WILLOW



Total Area 157m² | Bedrooms 3 | Bathrooms 3

Apartment Area 131m² | Balcony/Patio 26m² | Parking 2 x Basement Parkings

APARTMENT TYPE T1



Total Area 147m² | Bedrooms 3 | Bathrooms 3

Apartment Area **118m²** | Balcony/Patio **29m²** | Parking **2 x Basement Parkings**

APARTMENT TYPE T2



Total Area 147m² | Bedrooms 3 | Bathrooms 3

Apartment Area **118m²** | Balcony/Patio **29m²** | Parking **2 x Basement Parkings**

APARTMENT TYPE N1



Total Area 118m² | Bedrooms 2 | Bathrooms 2
Apartment Area **89m² | Balcony/Patio 29m²**
Parking **2 x Basement Parkings**

APARTMENT TYPE N2



Total Area 116m² | Bedrooms 2 | Bathrooms 2
Apartment Area **87m² | Balcony/Patio 29m²**
Parking **2 x Basement Parkings**

APARTMENT TYPE N3



Total Area 116m² | Bedrooms 2 | Bathrooms 2
Apartment Area **87m² | Balcony/Patio 29m²**
Parking **2 x Basement Parkings**

APARTMENT TYPE L1



Total Area 108m² | Bedrooms 2 | Bathrooms 2
Apartment Area **88m² | Balcony/Patio 20m²**
Parking **2 x Basement Parkings**

APARTMENT TYPE L2



Total Area 107m² | Bedrooms 2 | Bathrooms 2
Apartment Area **87m² | Balcony/Patio 20m²**
Parking **2 x Basement Parkings**

APARTMENT TYPE L3



Total Area 108m² | Bedrooms 2 | Bathrooms 2
Apartment Area **88m² | Balcony/Patio 20m²**
Parking **2 x Basement Parkings**

1 BED LAYOUTS

APARTMENT TYPE F



Total Area 80m² | Bedrooms **1** | Bathrooms **1**
Apartment Area **60m²** | Balcony/Patio **20m²**
Parking **1 x Basement Parking**

APARTMENT TYPE C



Total Area 79m² | Bedrooms **1** | Bathrooms **1**
Apartment Area **56m²** | Balcony/Patio **23m²**
Parking **1 x Basement Parking**

APARTMENT TYPE B



Total Area 70m² | Bedrooms **1** | Bathrooms **1**
Apartment Area **60m²** | Balcony/Patio **10m²**
Parking **1 x Basement Parking**

APARTMENT TYPE A

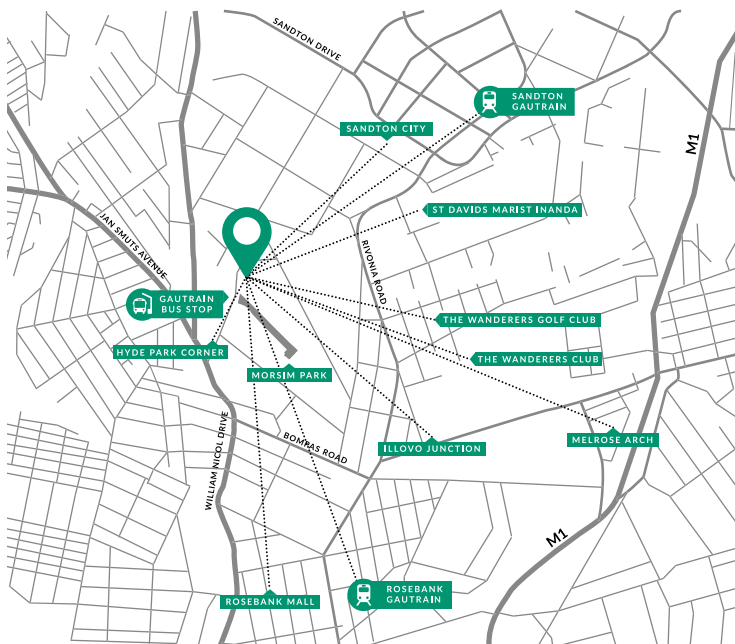


Total Area 69m² | Bedrooms **1** | Bathrooms **1**
Apartment Area **56m²** | Balcony/Patio **13m²**
Parking **1 x Basement Parking**

THE PERFECT LOCATION



LOCAL AMENITIES



- 01 | 0.2km Morsim Park
- 02 | 0.2km Gautrain Bus Stop
- 03 | 0.5km Hyde Park Corner
- 04 | 2.5km The Wanderers Golf Club
- 05 | 2.7km Illovo Junction
- 06 | 2.8km The Wanderers Club
- 07 | 3.2km Rosebank Mall
- 08 | 3.4km St Davids Marist Inanda
- 09 | 3.5km Rosebank Gautrain Station
- 10 | 3.5km Sandton City
- 11 | 4.0km Sandton Gautrain Station
- 12 | 5.0km Melrose Arch

the EMERALD

HYDE PARK



To secure your share of luxury living, get in touch with our sales team.