

THE MELVILLE

41

MELVILLE ROAD
HYDE PARK

VIEW THE
SHOW UNIT
AT 41 MELVILLE ROAD

**FROM
R5 999 000**



Legaro
PROPERTIES

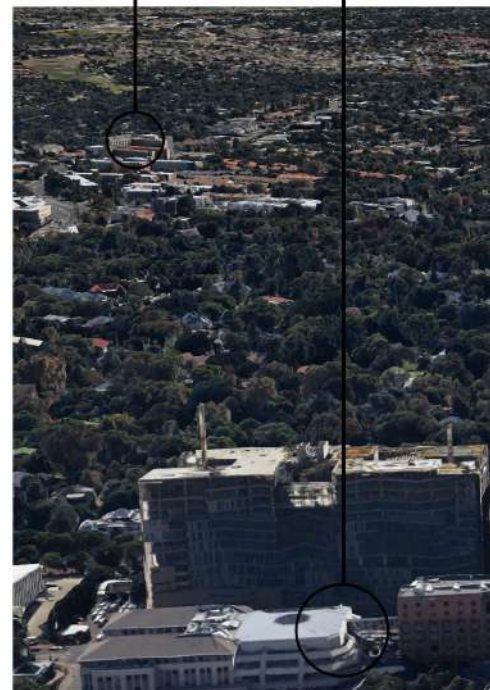
WWW.LEGARO.CO.ZA

LOCATION



HYDE PARK CORNER
APP 2.2KM

ROSEBANK
APP 2.6KM



ILLOVO BOULEVARD

APP 400M

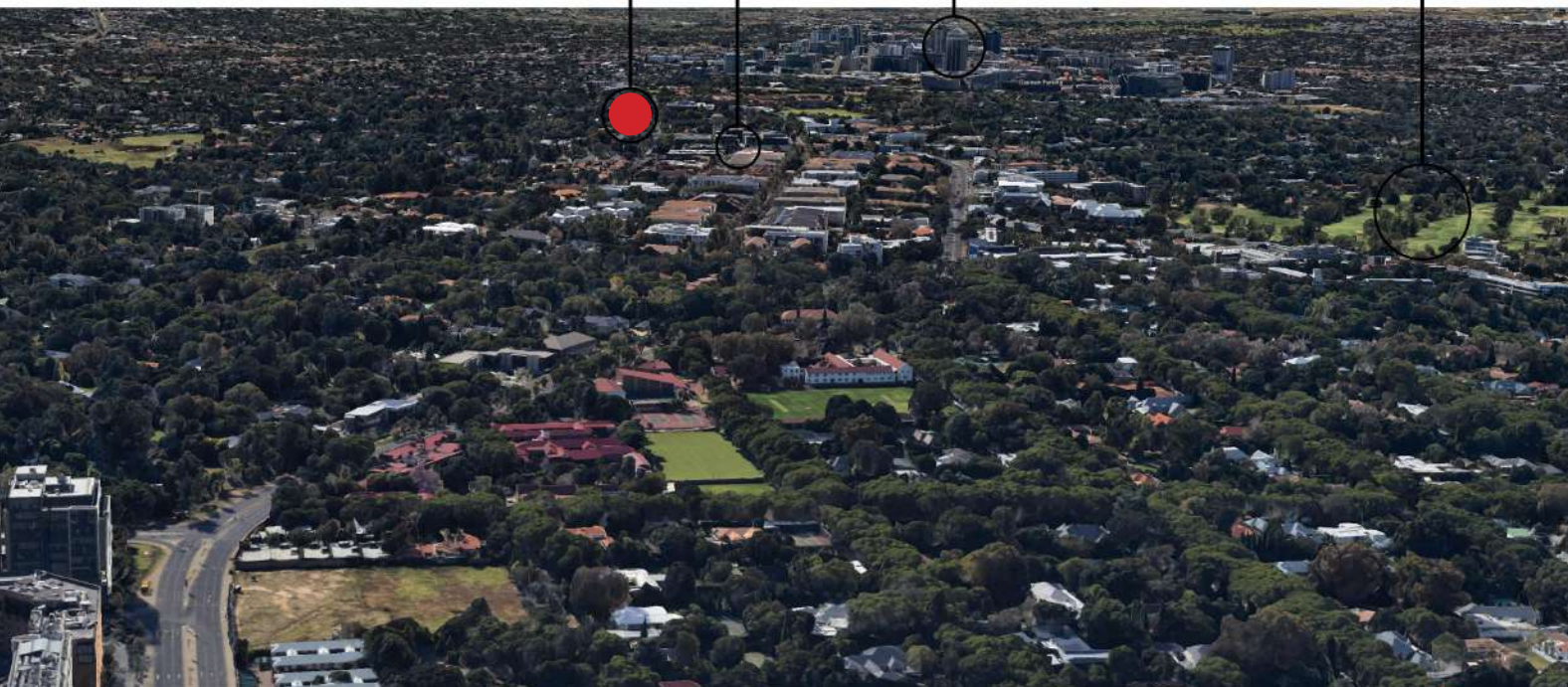
**THE
MELVILLE**

SANDTON CITY

APP 2.7KM

WANDERERS CLUB

APP 1.7KM

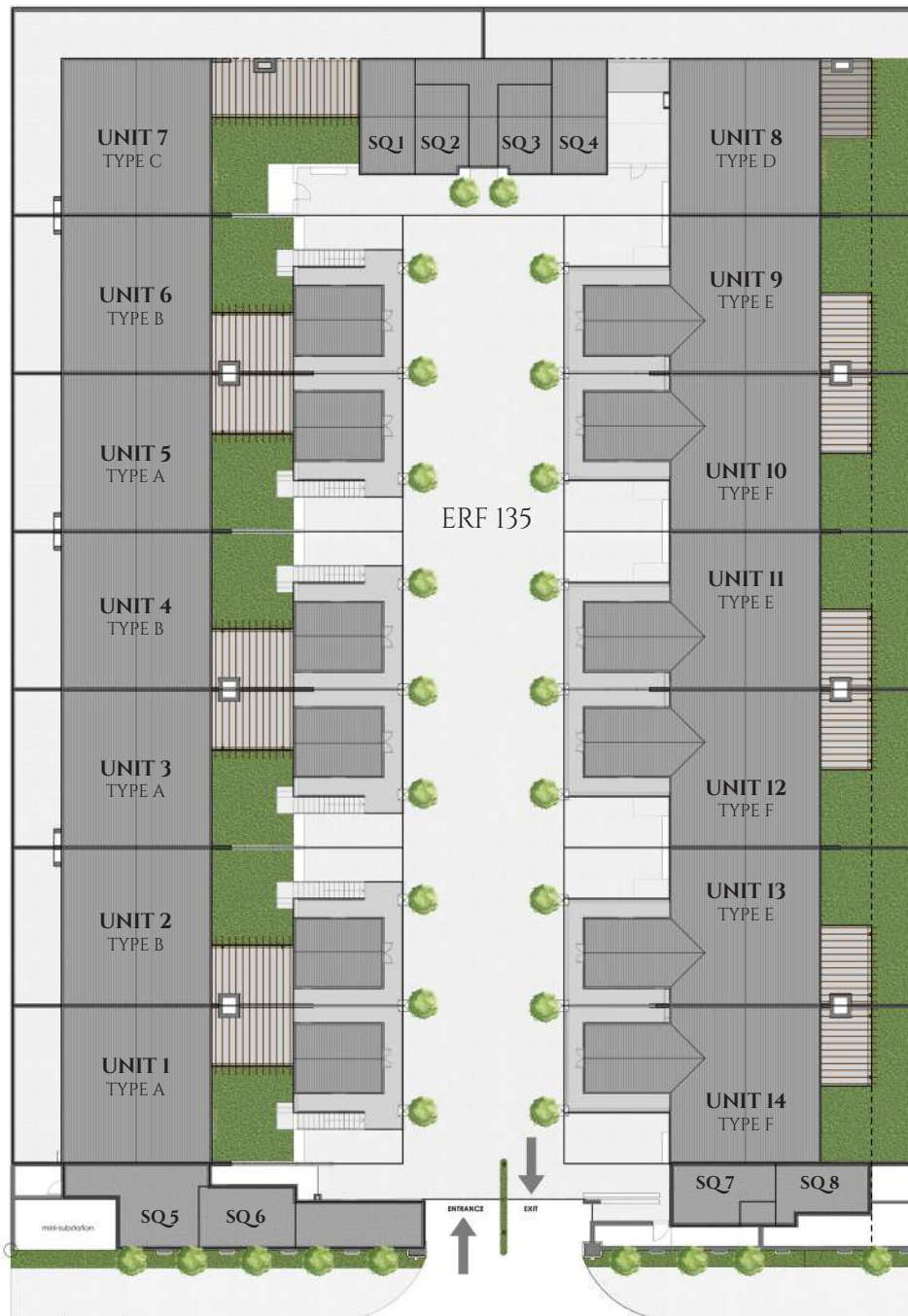


ENTRANCE VIEW



SITE LAYOUT

14 UNITS ON SITE & 8 ADDITIONAL STAFF QUARTERS



UNIT LAYOUTS

A TYPE 4 BEDROOM, 4.5 BATHROOM



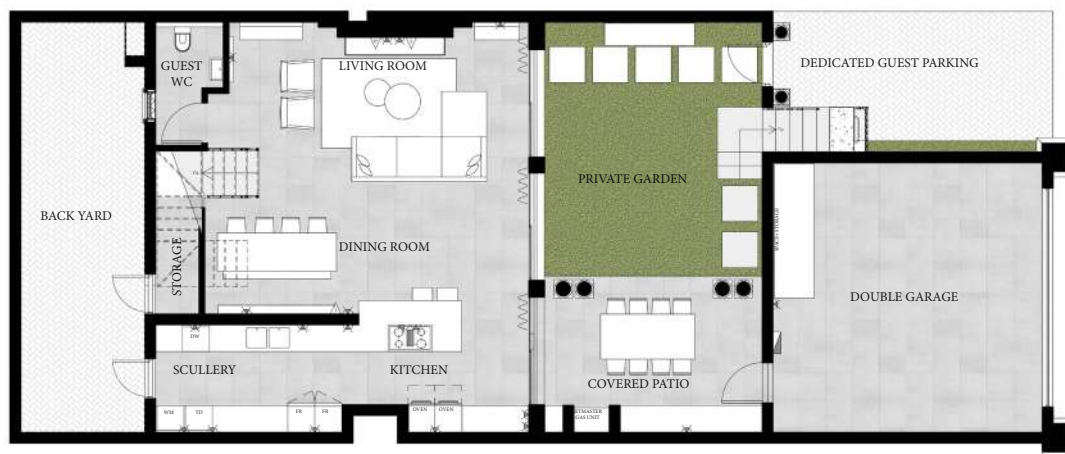
UNIT AREA: 234m²

BALCONIES: 40m²

TOTAL AREA: 274m²

UNIT LAYOUTS

B TYPE 4 BEDROOM, 4.5 BATHROOM



GROUND FLOOR PLAN



FIRST FLOOR PLAN

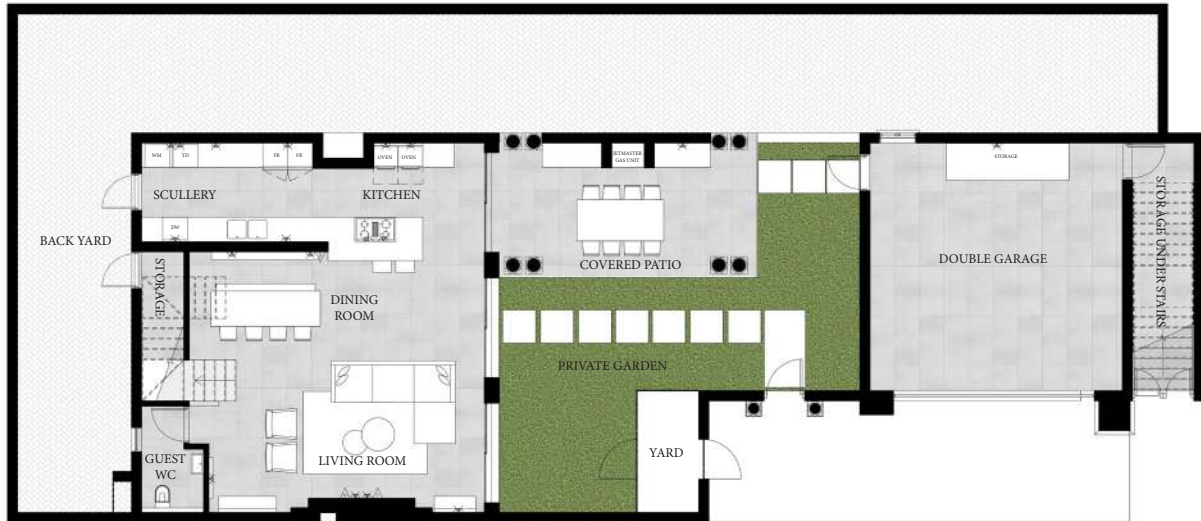
UNIT AREA: 234m²

BALCONIES: 40m²

TOTAL AREA: 274m²

UNIT LAYOUTS

C TYPE 3 BEDROOM, 3.5 BATHROOM



GROUND FLOOR PLAN



FIRST FLOOR PLAN

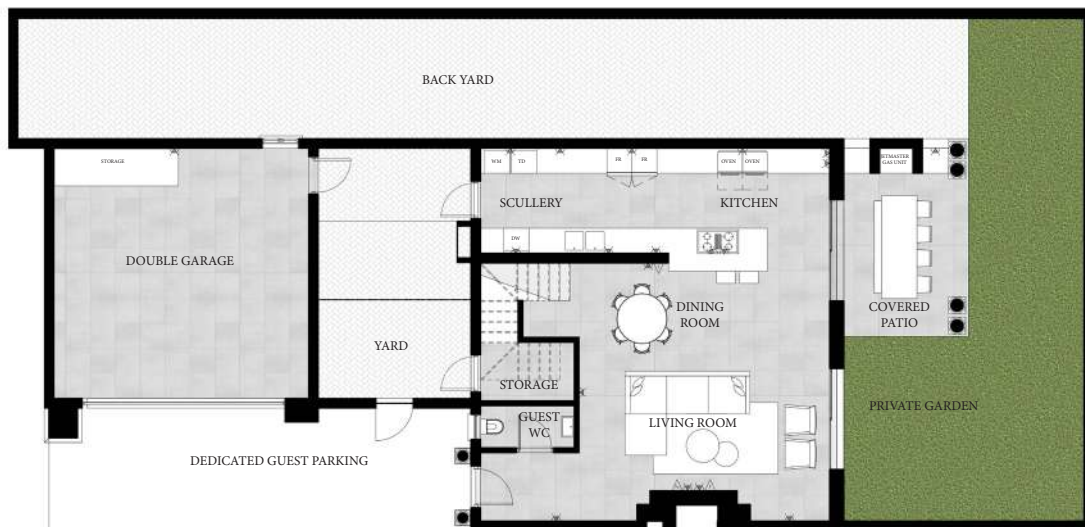
UNIT AREA: 223m²

BALCONIES: 30m²

TOTAL AREA: 253m²

UNIT LAYOUTS

D TYPE 3 BEDROOM, 3.5 BATHROOM



GROUND FLOOR PLAN



FIRST FLOOR PLAN

UNIT AREA: 207m²

BALCONIES: 14m²

TOTAL AREA: 221m²

UNIT LAYOUTS

E TYPE 4 BEDROOM, 4.5 BATHROOM



GROUND FLOOR PLAN



FIRST FLOOR PLAN

UNIT AREA: 231m²

BALCONIES: 33m²

TOTAL AREA: 264m²

UNIT LAYOUTS

F TYPE 4 BEDROOM, 4.5 BATHROOM



GROUND FLOOR PLAN



FIRST FLOOR PLAN

UNIT AREA: 231m²
BALCONIES: 33m²

TOTAL AREA: 264m²

UNIT LAYOUTS

STAFF QUARTERS



FIRST FLOOR PLAN



GROUND FLOOR PLAN



SQ1	SQ2	SQ3	SQ4	SQ5	SQ6	SQ7	SQ8
AREA: 21m ²	AREA: 16m ²	AREA: 16m ²	AREA: 21m ²	AREA: 31m ²	AREA: 21m ²	AREA: 17m ²	AREA: 17m ²

FEATURES INCLUDE:

14 DOUBLE STOREY UNITS
8 STAFF QUARTERS
CENTRALLY LOCATED IN HYDE PARK
DEDICATED GUEST PARKINGS
PRIVATE GARDENS
NORTH FACING
SMEG KITCHEN APPLIANCES
HANS GROHE TAPS
DOWN LIGHTS COMBINED WITH SELECTED FEATURE LIGHTS
WOOD BURNING FIREPLACES
SOLAR SUPPLEMENTED ELECTRICITY
BREEZE AIR EVAPORATIVE COOLING SYSTEMS
FIBRE READY
DSTV READY

THE MELVILLE

41

MELVILLE ROAD
HYDE PARK

Legaro
PROPERTIES

WWW.LEGARO.CO.ZA



KAREN MATHEWS

082 4167 426

DAWN DORFMAN

082 4557 898



DAFFONCHIO
ARCHITECTS

www.daffonchio.co.za | Tel: 011 447 8118